



SINCE 1909  
JAPAN

# KDK Technical Workshop 2023

[www.kdk.com.my](http://www.kdk.com.my)



SINCE 1909  
JAPAN

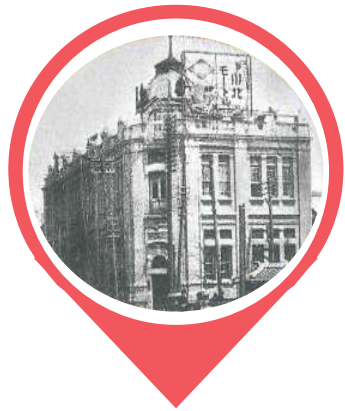
[www.kdk.com.my](http://www.kdk.com.my)

# History of KDK



SINCE 1909  
JAPAN

# KAWAKITA DENKI KIGYOSHA



1909

KDK was  
founded in  
Japan



1913

Mass production  
and sold of  
“Typhoon type”  
Electrical fan



1921

Development of  
Ceiling Fan



2002

KDK was established  
in Petaling Jaya,  
Malaysia



SINCE 1909  
JAPAN

# KDK MALAYSIA

**SALES &  
MARKETING**

**DEALER  
NETWORK &  
SERVICE  
CENTRES**





SINCE 1909  
JAPAN

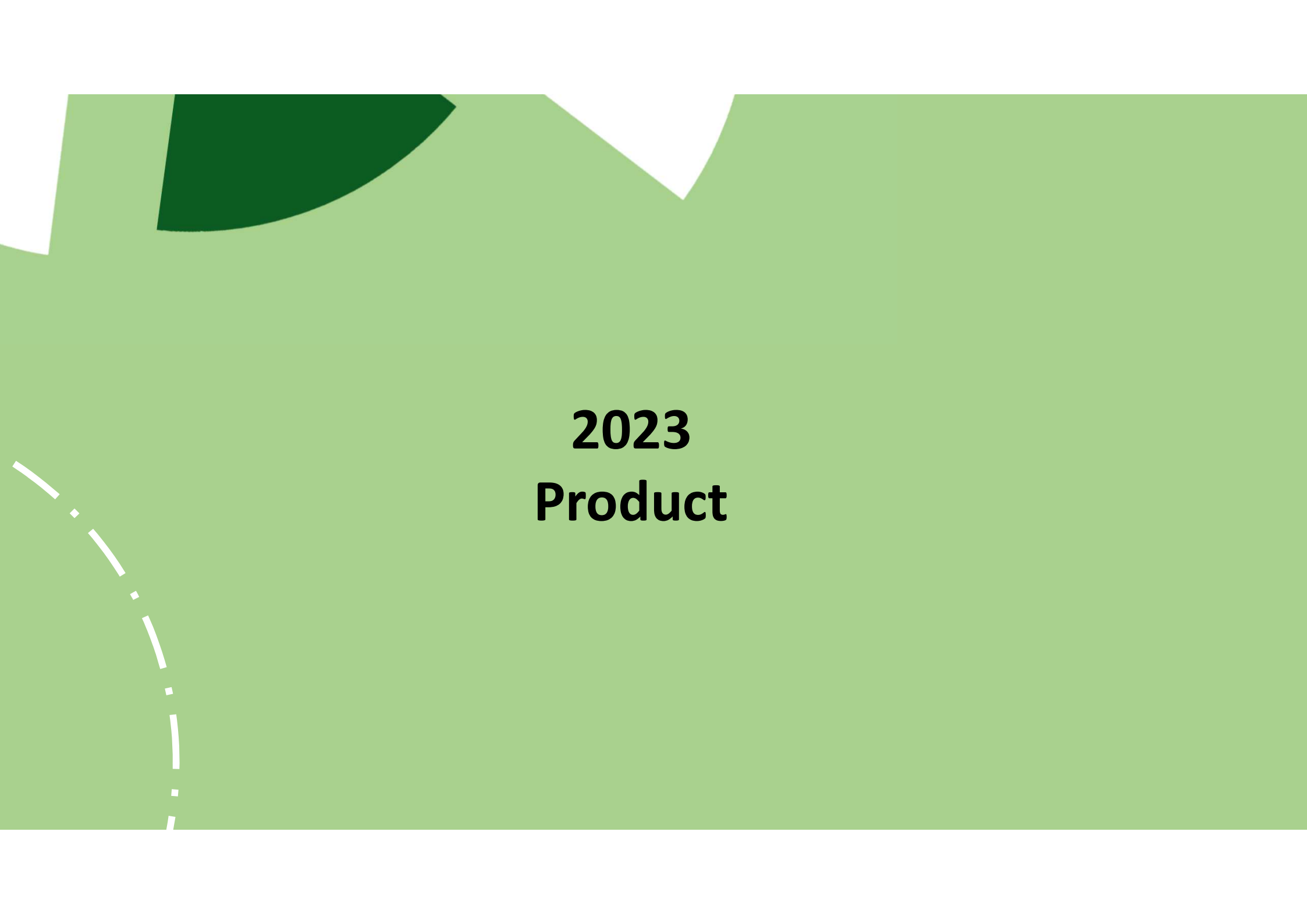
# KDK MALAYSIA

**SALES &  
MARKETING**

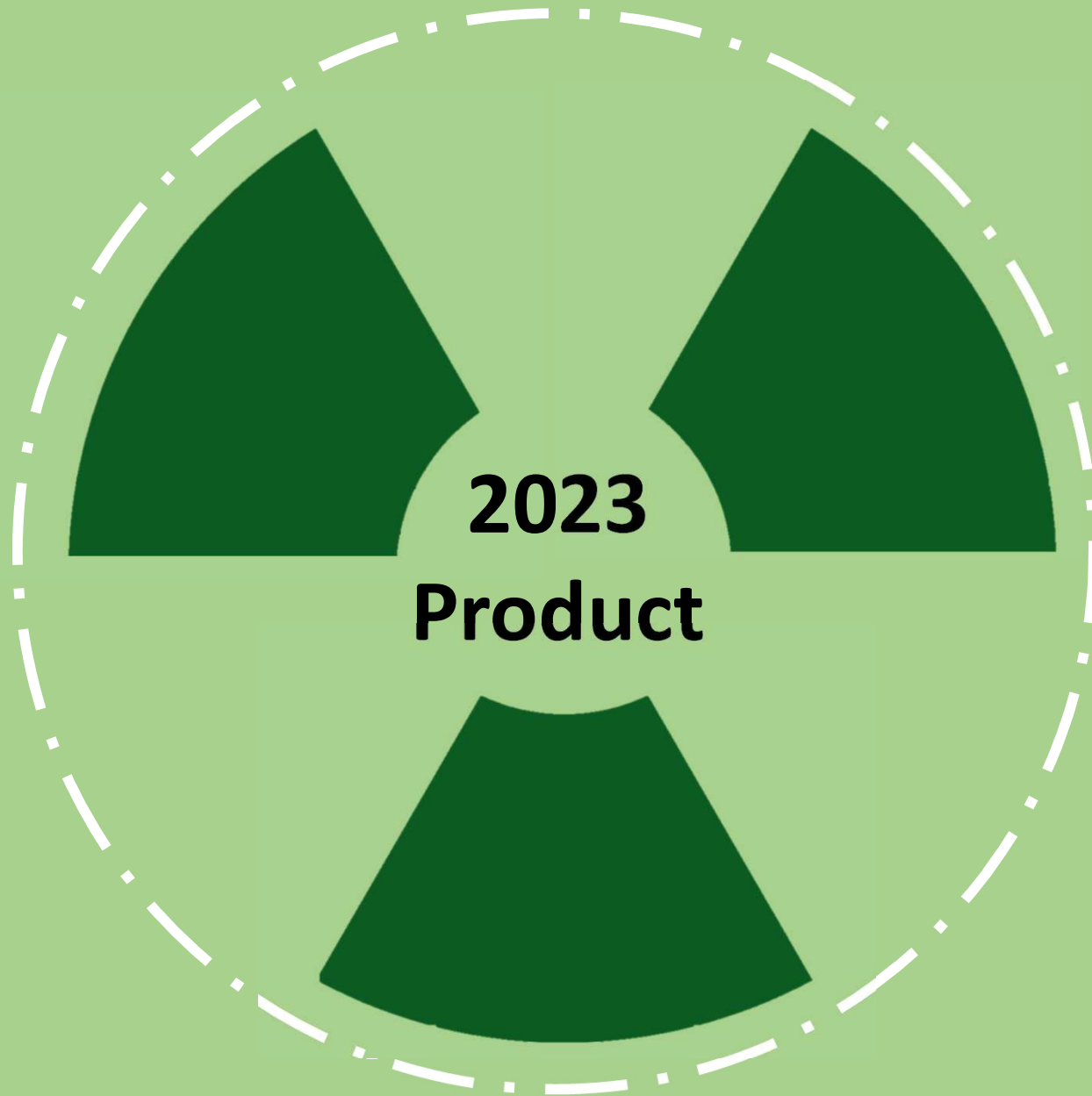


DEALER  
NETWORK &  
SERVICE  
CENTRES





# **2023 Product**



**2023**  
**Product**



**2023  
Product**



# DC4

Curve Surface

High gloss around

Curve Surface

Blade cover  
(moving part)



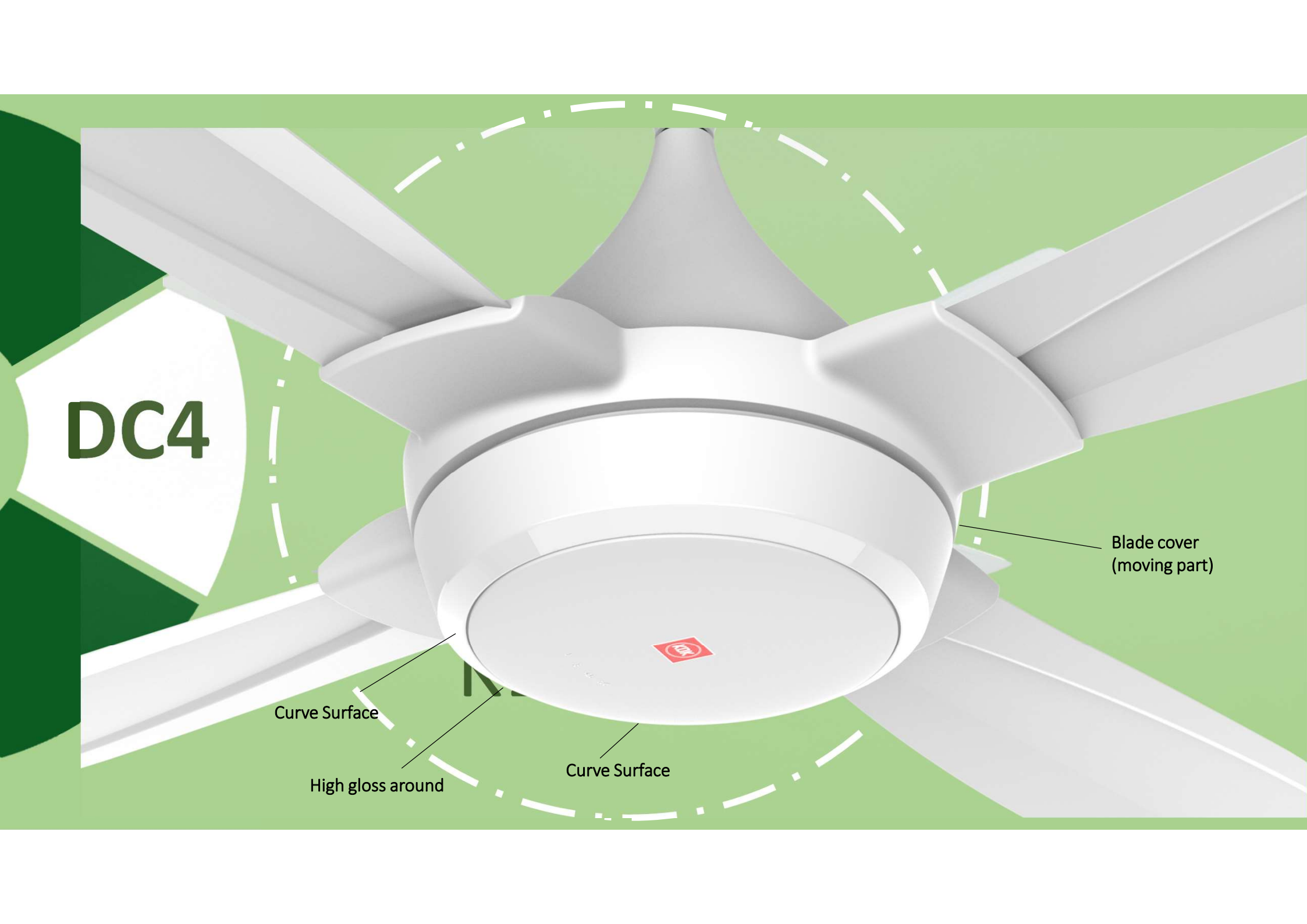
DC4

Curve Surface

High gloss around

Curve Surface

Blade cover  
(moving part)





**DC4**



## **K14TE (140CM / 56")**

- New Generation DC(direct current) motor
- Remote Control with 5-preset Speed
  - Metal Blade for stronger air breeze
  - 1, 3, 6 hours OFF Timer
- 1/f YURAGI feature
- Sleep Mode



On/Off Button



OFF/ON

1

2

3

SPEED

4

5

Speed Button

1h

3h

6h

Off Timer Button

OFF TIMER

Sleep Mode Button

SLEEP

CANCEL

1/f  
YURAGI

1/f Yuragi Button

Timer Cancel  
Button





**DC4**



Motor Type

DC Motor

Power

Low

4W

Consumption

High

29W

Air Delivery

220 m<sup>3</sup>/min

Noise Level

54dB

MEPS Rating

5 Star

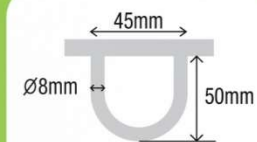
Net Weight(kg)

5.1 kg

**BABY  
FAN**

**KZF-GY**

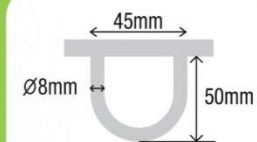
**HOOK**



**BABY  
FAN**

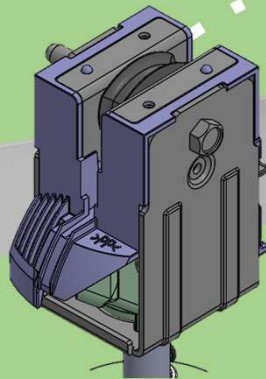
**K  
LF-WT**

**HOOK**





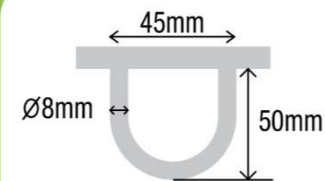
# BABY FAN



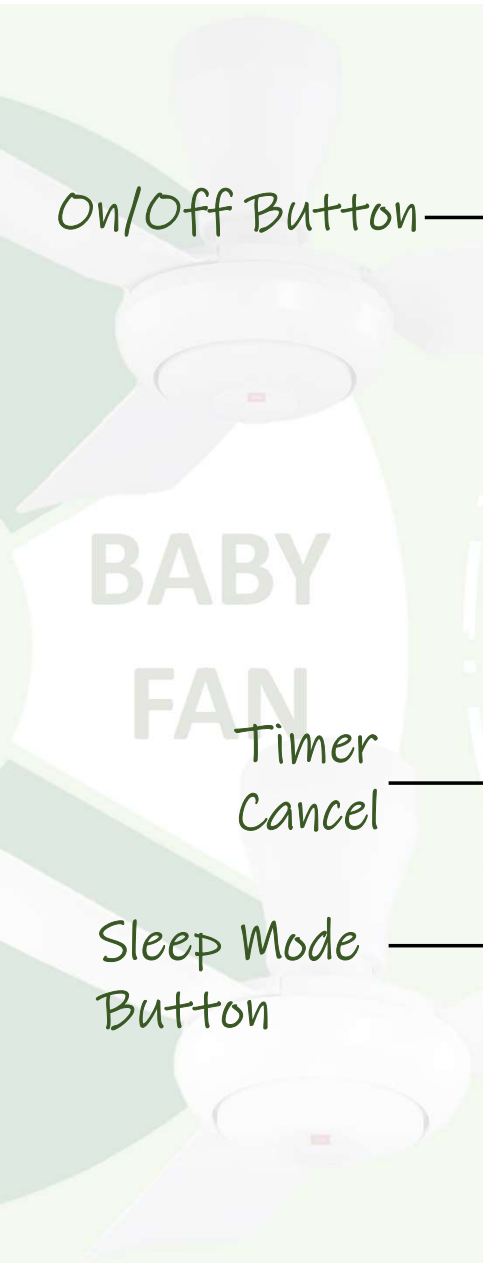
## K11ZF (110CM / 44")

- Hanger Plate Assy
- Remote Control with 3-preset Speed
- PPG Plastic Blade for stronger air breeze
- 1, 3, 6 hours OFF Timer
- Sleep Mode

### HOOK







On/Off Button

Speed Button

Off Timer Button

Timer  
Cancel

Sleep Mode  
Button





**K11ZF**

Motor Type

AC Motor

Power

Low

20W

Consumption

High

58W

Air Delivery

170 m<sup>3</sup>/min

Noise Level

49.5dB

MEPS Rating

5 Star

Net Weight(KG)

5.2 kg

# BABY FAN

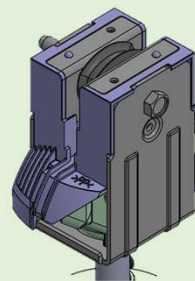
BLADE  
SIZE

Installation  
Method

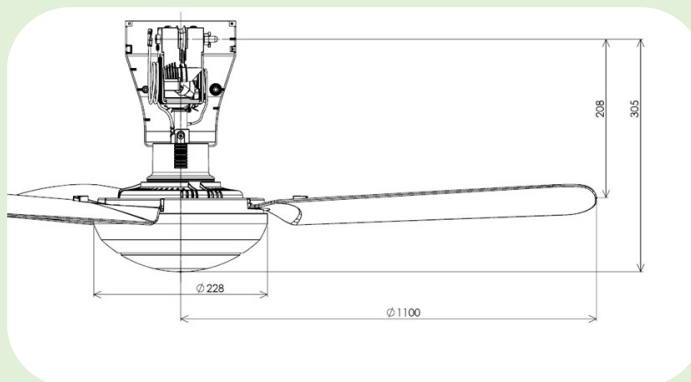
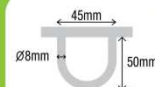


K11ZF

(110CM / 44")

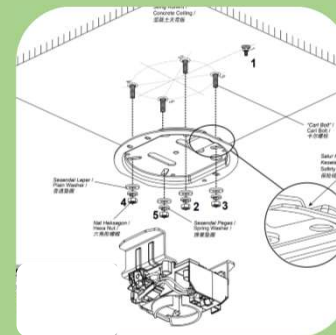


HOOK

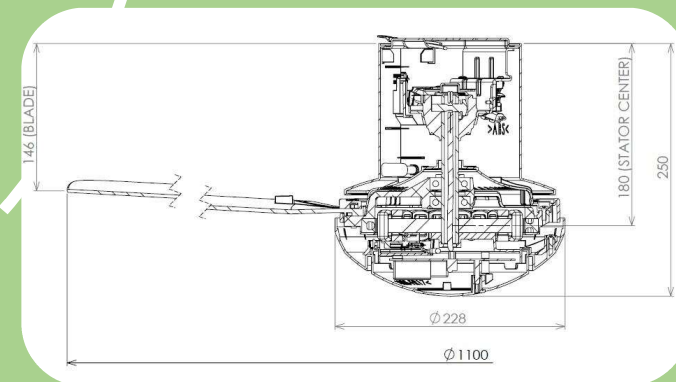


K11Z1

(110CM / 44")



NO HOOK  
REQUIRED



# BABY FAN

Colour  
Variance

Remote  
Control



K11ZF

K11Z1



**KU-50Y DG**







**KU-50Y DG**

## **KU-50Y DG (50CM / 20")**

- Aluminum blade for stronger airflow
- Turbo fin guard for maximum airflow
- Prevent rusty problem



**KU-50Y**

A white KDK K15VC ceiling fan with three blades and a hexagonal decorative cover. The fan is shown from a low angle, looking up. The background is a light green wall with a dark green circular graphic element on the left. A dashed white circle highlights the fan's head and the text to its right.

**K15VC**

## **K15VC (150CM / 60")**

- Hexagon Decorative Cover
- Preassembled fan rod
- Comply with government project standard



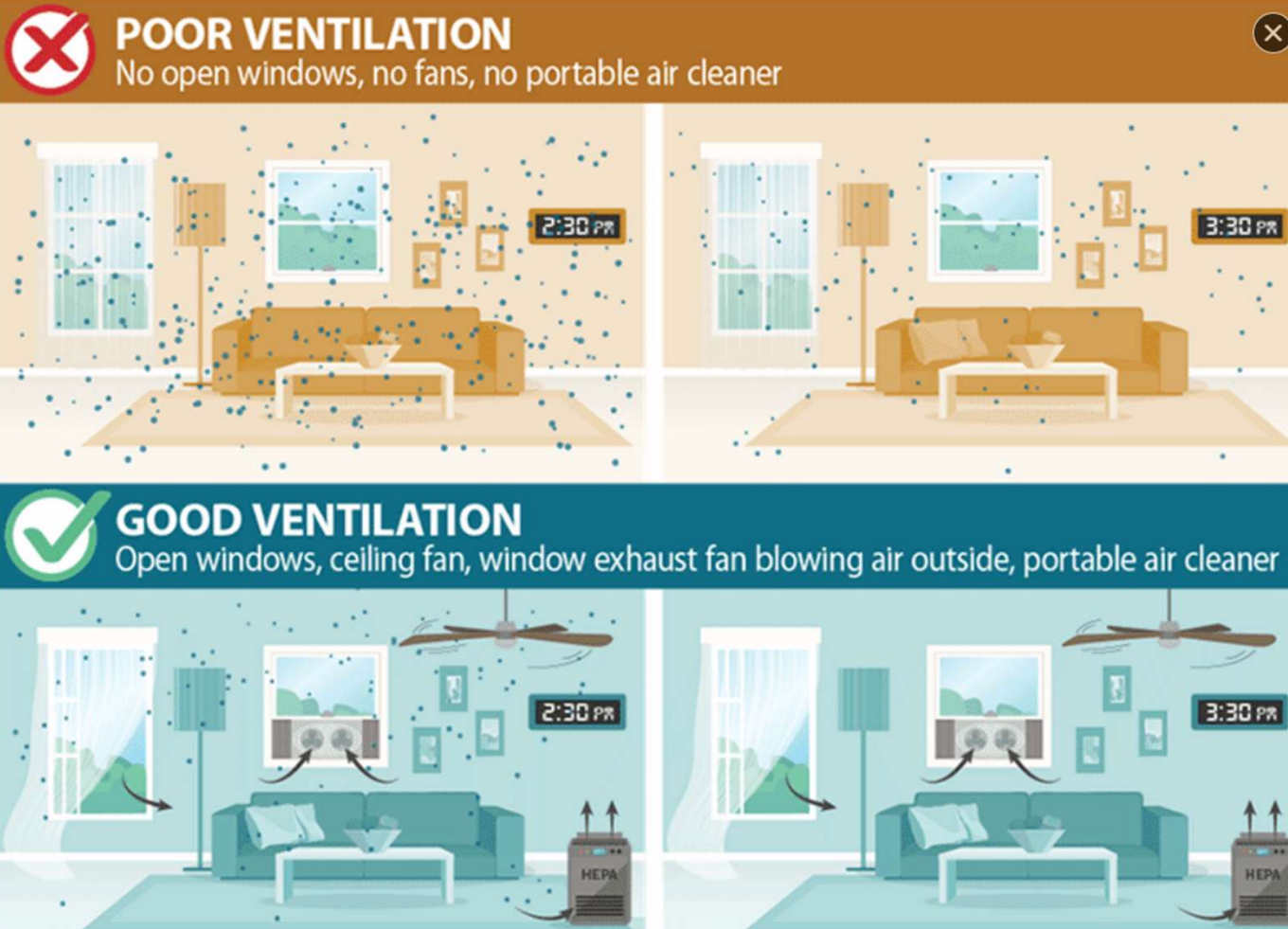
SINCE 1909  
JAPAN

[www.kdk.com.my](http://www.kdk.com.my)

# VENTILATING FAN SERIES



# VENTILATING FAN




*Ventilation helps to prevent dust and virus particles from accumulating in the air.*


# INDOOR POLLUTION




MITES POPULATION INCREASE IN HUMIDITY ENVIRONMENT



CONTAMINATED AIR CAUSED SICK HOME SYNDROME. COMMON SYMPTOMS ARE EYES SORE, NAUSEA, ALLERGIC, BREATHING TROUBLE.



TERMITES ARE ATTRACTED TO DAMP WOOD. HUMID AND RAINY MAKE HOME MORE PRONE TO MOISTURE.



MOLD GROWTH IN HUMID AIR AND MOISTURE THAT BUILDS-UP DURING HOT SHOWER OR BATH

# Effects of Ventilation



## INTAKE AND EXHAUST

Fresh air and  
polluted air



## EXHAUST UNCOMFORTABLE ODOR

Bad smell



## AIR EXCHANGE

Control room  
temperature



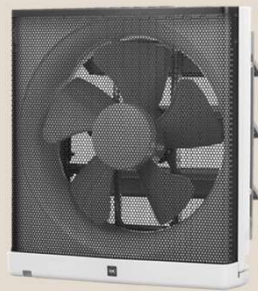
## REMOVE HUMIDITY

Hot Steam and  
water residue



# WALL MOUNT

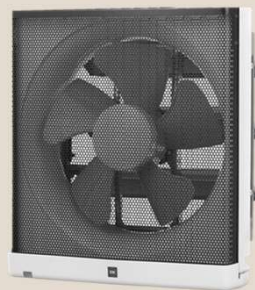
- High efficiency
- Easy maintenance
- Automatic shutter



15AAQ1 , 20AQW8  
25AQW7 , 30AQW8

# WALL MOUNT

- High efficiency
- Easy maintenance
- Automatic shutter



20ALH, 25ALH

# WALL MOUNT

- High efficiency
- Easy maintenance
- Automatic shutter



25AUFA

# WALL MOUNT

- High efficiency
- Easy maintenance



10EGKA, 15EGKA

# GLASS MOUNT

- High efficiency
- Easy maintenance
- Window Glass Mounted





# CEILING MOUNT PROPELLER

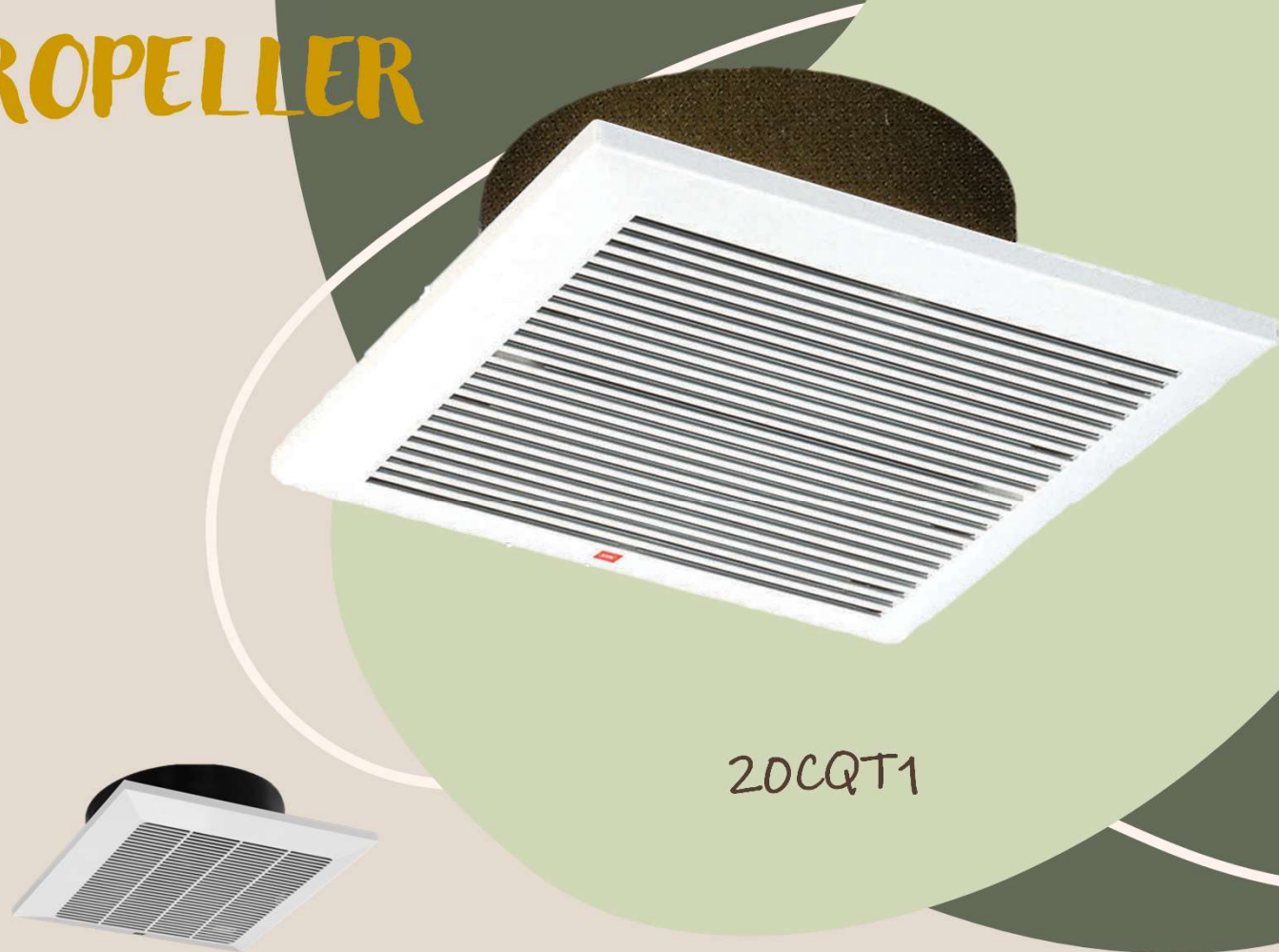
- High efficiency
- Easy maintenance
- Durable operation



15TGQZ

# CEILING MOUNT PROPELLER

- High efficiency
- Easy maintenance
- Durable operation



# CEILING MOUNT PROPELLER

- High efficiency
- Easy maintenance
- Durable operation



25TGQ7

# CEILING MOUNT SIROCCO

- Stylish louver design
- Quiet operation
- Reverse flow prevention shutter



# CEILING MOUNT SIROCCO

- Quiet operation
- Reverse flow prevention shutter



17CUG, 24CUG  
24CHG, 24CDG

# CEILING MOUNT SIROCCO

- Quiet operation
- Reverse flow prevention shutter
- 2 Speed motor for better convenience



27CHH , 32CDH  
38CDG , 38CHG



# HOW TO DECIDES SUITABLE VENTILATION FAN

step  
1

- DETERMINE YOUR ROOM SIZE (IN FT)
- PURPOSE OF THE AREA



HEIGHT (ft)

WIDTH (ft)

LENGTH (ft)



# HOW TO DECIDES SUITABLE VENTILATION FAN



- DETERMINE AIR EXCHANGE FREQUENCY

I: Type of room			II: Necessary frequency of ventilation per hour		
	I	II		I	II
Hotel	Dance hall	8	Library	Reading room	6
	Dining hall	8	Photo studio	Darkroom	10
	Kitchen	15	School	Laboratory	6
	Hallway	5		Cooking room	15
	Toilet	5		Auditorium	6
	Lavatory	10		Gymnasium	8
	Boiler room	20		Toilet	12
	Laundry	15		Library	6
Hospital				Classroom	6
	Waiting room	10	Theater	Auditorium	6
	Clinic	6		Hallway	6
	Ward	6		Smoking room	12
	Bathroom	5		Toilet	10
	Office	6		Projection booth	20
	Restaurant	8		Workroom	6
	Kitchen	15		Telephone switch board room	6
	Gallery	5	Factory	Painting room	20
	Toilet	10		Dynamo room and substation	20
	Boiler room	10		Condenser room	15
	Laundry	15		Office	6
	Operating room	15	Restaurant and snack bar	Restaurant	6
	Disinfecting room	12		Kitchen	20
	Room for the patients receiving medical treatment for the diseases of respiratory organs	10	Office building	Office	6
Public toilet		20		Waiting room	10
Vessel	Passenger room	6		Conference room	12
Home	Kitchen	15		Display room	10
	Parlor	6		Toilet	10
	Living room	6	Rooms where poisonous or inflammable gas is produced		more than 20



# HOW TO DECIDES SUITABLE

## VENTILATION FAN

step  
3

- Application of Formula

$$\frac{\text{ROOM SIZE(ft) (H X L X W)}}{60} \times \text{FREQUENCY AIR EXCHANGE REQUIRED}$$

Sample: Bathroom area

$$\frac{(20 \times 10 \times 10)}{60} \times 5$$

60

$$\text{Cfm required} = 167$$

	I	II
Hotel	Dance hall	8
	Dining hall	8
	Kitchen	15
	Hallway	5
	Toilet	5
	Lavatory	10
	Boiler room	20
	Laundry	15

# HOW TO DECIDES SUITABLE VENTILATION FAN

- Log on to [www.kdk.com.my](http://www.kdk.com.my)  
For ventilation fan selector

 VENTILATING FAN SELECTOR

