



## Mini sirocco fan

---

# INSTRUCTION MANUAL

---

K10CG1

K12CG1

K14CG1

K16CG1

K17CG1

K17CT1

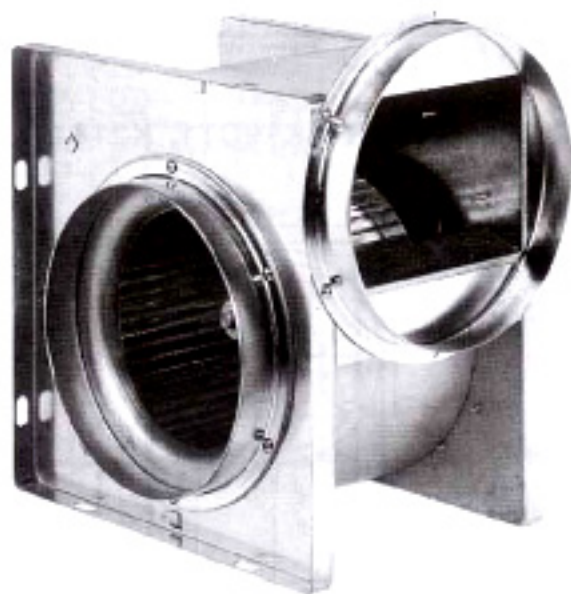
K19CG1

K19CT1

K21CG1

K21CT1

---



Thank you for purchasing the **KDK** Mini sirocco fan.

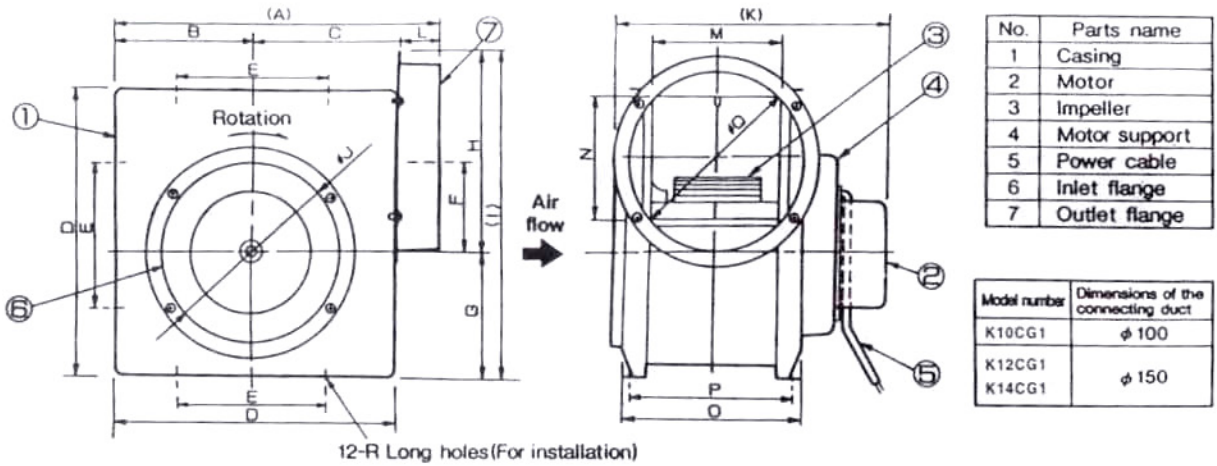
Please be sure to always follow the details of these instructions in installing and using your unit otherwise sudden accidents or breakdowns occur.

Please check whether there are any breakage or deformation or not before be intalled.

# 1. Names and Dimensions of Components

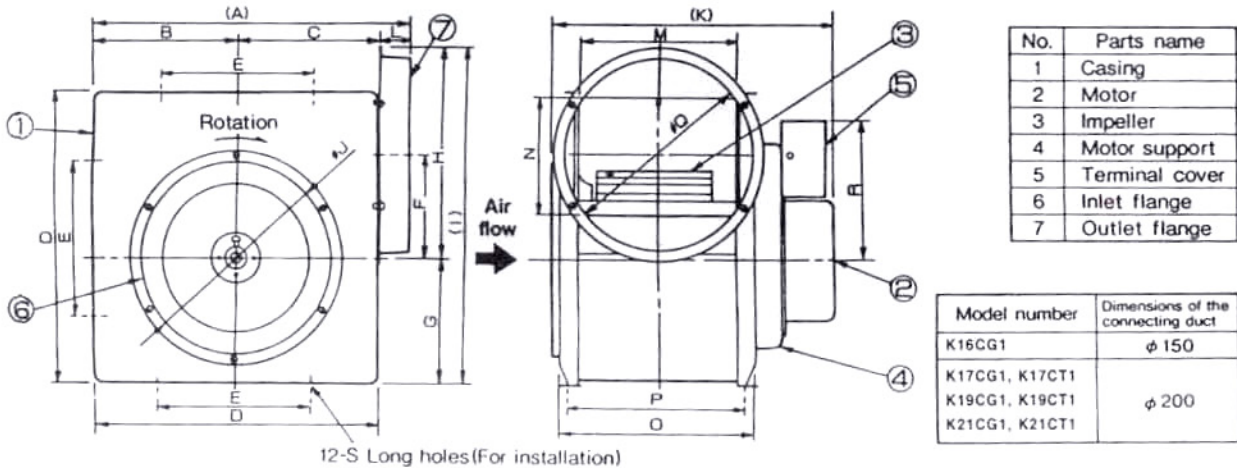
Dimensions mm.

## K10CG1, K12CG1, K14CG1



Model number	A	B	C	D	E	F	G	H	I	J	K	L	M	N	O	P	Q	R	Long holes
K10CG1	206	86	95	180	120	56	82	117	199	98	196	24	80	74	120	106	98	6	20
K12CG1	261	112	119	230	120	76	100	161	261	148	226	29	105	98	145	131	148	6	20
K14CG1	261	112	119	230	120	76	100	161	261	148	224	29	105	98	145	131	148	6	20

## K16CG1, K17CG1, K17CT1, K19CG1, K19CT1, K21CG1, K21CT1



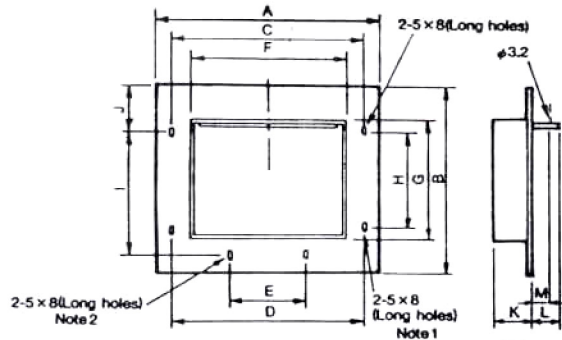
Model number	A	B	C	D	E	F	G	H	I	J	K	L	M	N	O	P	Q	R	S	Long holes
K16CG1	281	125	126	250	160	85	108	171	279	148	237	29	117	102	157	143	148	128	6	20
K17CG1, K17CT1	331	151	150	300	160	106	130	216	346	198	281	29	165	116	205	187	198	142	10	20
K19CG1, K19CT1	331	151	150	300	160	106	130	216	346	198	296	29	165	116	205	187	198	142	10	20
K21CG1, K21CT1	361	166	165	330	200	121	145	233	378	198	373	29	190	110	250	226	198	161	12	24

## Angular flange ( Optional )

- The fan is equipped with a circular flange. Use an angular flange for connection to an angular duct.

Note 1. Applied for K10CG1-KF, K12CG1-KF  
K16CG1-KF and K17CG1-KF

Note 2. Applied for K21CG1-KF



Dimensions mm.

Model number	Applied model number	A	B	C	D	E	F	G	H	I	J	K	L	M	Plank
K10CG1-KF	K10CG1	120	94	96.2	96.2	—	81.5	75.5	55.5	—	19.1	25	15	11	0.8
K12CG1-KF	K12CG1, K14CG1	145	128	131.8	131.8	—	106.5	100	92.3	—	19.1	25	15	11	
K16CG1-KF	K16CG1	157	142	131.8	131.8	—	118.5	104	92.3	—	22	25	15	11	
K17CG1-KF	K17CG1, K17CT1, K19CG1, K19CT1	205	156	182.8	182.8	—	166.5	118	105.5	—	25.8	30	25	16	
K21CG1-KF	K21CG1, K21CT1	250	170	211	—	105.5	191.5	112	—	91.4	67.5	30	25	16	

## 2. Installation Cautions

- Observe the following precautions as to the place of installation and the installation procedure.

<p>Do not use the fan in any place where an excessive temperature rise is expected or soot is being produced.</p>	<p>Do not use the fan in the place where humidity is high.</p>	<p>The room shall have an air supply port for effective ventilation. (Do not use the fan for ventilation of flammable gases or dust.)</p>	<p>Provide an access door for inspection and maintenance.</p>
<p>Connect the duct avoiding the following cases.</p> <p>(1) Sharp bending angle. (2) Bended more than once. (3) Reduced diameter at the connection. (4) Bending near the discharge port or suction port.</p>	<p>Install a fan protection device like a motor over-load breaker in the wiring.</p>	<p>When connecting an electric flow rate control unit (inverter, slidac, etc.) be sure to check the safety of the equipment. (The motor may be burned.)</p>	

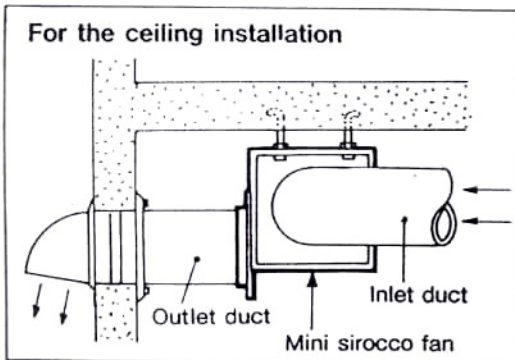
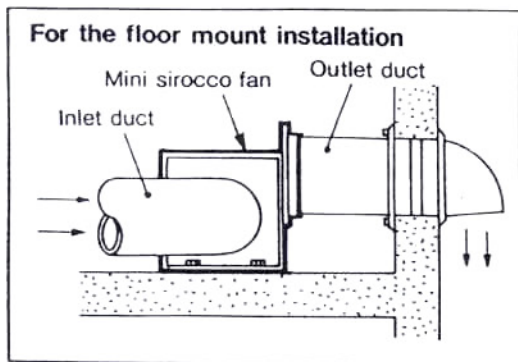
- The fan houses thermal protectors for the prevention of overheating. The protector functions in the event of an overload, phase interruption or stall.  
(When the thermal protector has functioned, turn the power off and contact the place you purchased it or installation shop.)

## 3. Maintenance Cautions

- Inspect and clean the fan every year for extended and safe use of it.
- The motor bearing is a sealed ball bearing. The grease life expectancy is about 20,000 hours. When abnormal noises or a reduction in air flow is observed, inspect the bearing and replace it if necessary.
- For maintenance and inspection work including the replacement of bearings and other parts, contact your professional service shop.

# 4. Installation Instructions

## 1. Installation



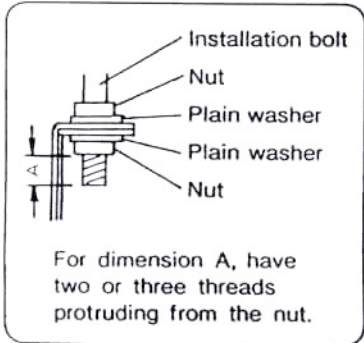
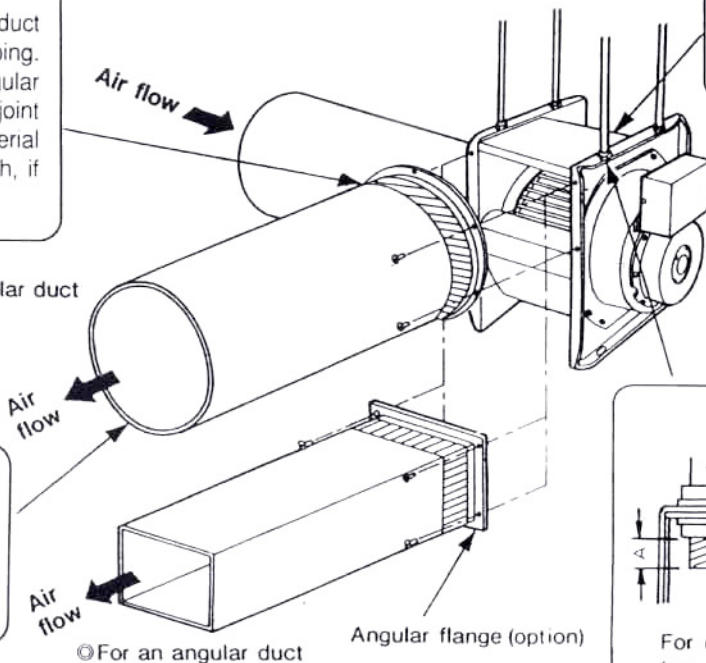
Prepare mounting bolts, nuts and plain washers while referring to the table below.

Model number	Bolts, nuts, plain washers
K10CG1, K12CG1 K14CG1, K16CG1	M5
K17CG1, K17CT1 K19CG1, K19CT1	M8
K21CG1, K21CT1	M10

Connect the circular duct to the adaptor by taping. Connect the rectangular duct with a flexible joint of non-flammable material such as a canvas cloth, if necessary.

Install the body horizontally.

Install the outdoor duct so that it is inclined at a gradient of 1/100 or more, with the outer side being lower.



## 2. Electric Wiring Caution

Ask the electrical shop for wiring.

- To the electrical shop who makes wiring.
- Kindly work in accordance with the electric equipment engineering standards and the working standard specified by the power company.
- According to the electrical installation standard, perform the grounding work.
- Connect the line after opening the terminal cover.
- Kindly connect as indicated in the following drawings.
- After wiring, check the rotation direction.
- For K10CG1, K12CG1 and K14CG1 which do not have two-speed motor, connect the lead wire the power line.

